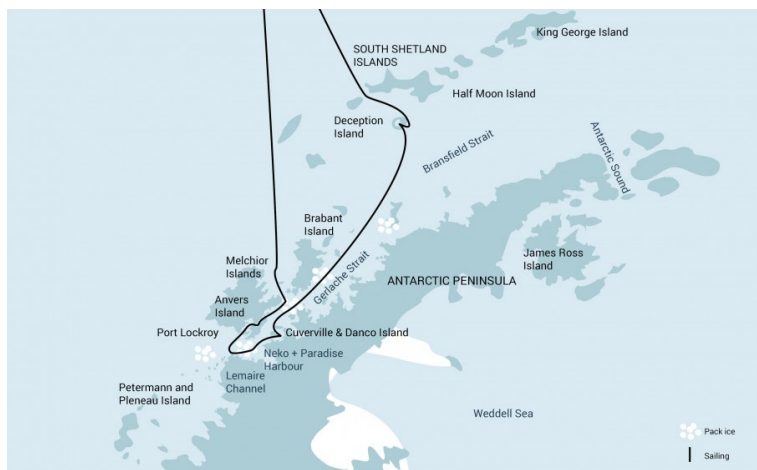


Antarctica

Classic Antarctica including Deception Island



Title:	Antarctica
Dates:	12 Dec - 22 Dec, 2021
Tripcode:	PLA24-21
Duration:	10 nights
Ship:	m/v Plancius
Embarkation:	Ushuaia
Disembarkation:	Ushuaia
Language:	English speaking voyage
Important:	Camping and kayaking are optional activities

ITINERARY

PLEASE NOTE: All itineraries are for guidance only. Programs may vary depending on local ice and weather conditions and in order to take advantage of opportunities to see wildlife. The on-board expedition leader determines the final itinerary. Itineraries may mention places that require permission to land, which must be granted by the relevant national authorities. Such permission is not granted prior to the publishing of these itineraries. Flexibility is paramount for expedition cruises. Average cruising speed of m/v Plancius is 10,5 knots.

This Antarctic Peninsula and South Shetland Islands cruise delivers you into a landscape of dark rugged rock, pure white snow, and a fantastic variety of wildlife. Come say hello to whales, seals, and thousands of penguins.

Day 1: End of the world, start of a journey

Your voyage begins where the world drops off. Ushuaia, Argentina, reputed to be the southernmost city on the planet, is located on the far southern tip of South America. Starting in the afternoon, you embark from this small resort town on Tierra del Fuego, nicknamed “The End of the World,” and sail the mountain-fringed Beagle Channel for the remainder of the evening.

Day 2 - 3: Path of the polar explorers

Over the next two days on the Drake Passage, you enjoy some of the same experiences encountered by the great polar explorers who first charted these regions: cool salt breezes, rolling seas, maybe even a fin whale spouting up sea spray. After passing the Antarctic Convergence – Antarctica’s natural boundary, formed when north-flowing cold waters collide with warmer sub-Antarctic seas – you are in the circum-Antarctic upwelling zone. Not only does the marine life change, the avian life changes too. Wandering albatrosses, grey-headed albatrosses, black-browed albatrosses, light-mantled sooty albatrosses, cape pigeons, southern fulmars, Wilson’s storm petrels, blue petrels, and Antarctic petrels are a few of the birds you might see.

Day 4 - 7: Enter the Antarctic

Gray stone peaks sketched with snow, towers of broken blue-white ice, and dramatically different wildlife below and above. You first pass the snow-capped Melchior Islands and Schollaert Channel, sailing between Brabant and Anvers Islands.

Sites you may visit include:

Danco Island – Activities here may focus on the gentoo penguins nesting on the island, in addition to the Weddell and crabeater seals that can be found nearby.

Neko Harbour – An epic landscape of mammoth glaciers and endless wind-carved snow, Neko Harbour offers opportunities for a Zodiac cruise and landing that afford the closest views of the surrounding alpine peaks.

Paradise Bay – You may be able to take a Zodiac cruise in these sprawling, ice-flecked waters, where there’s a good chance you’ll encounter humpback and minke whales.

Port Lockroy – After sailing through the Neumayer Channel, you may get a chance to visit the former British research station – now a museum and post office – of Port Lockroy on Goudier Island. You may also be able to partake in activities around Jougla Point, meeting gentoo penguins and blue-eyed shags.

There are great opportunities also for kayaking and camping in this area, and when conditions are right, you can even snowshoe around the shore and to the old ski-way at nearby Damoy Point.

Day 8: Scenes of South Shetland

The volcanic islands of the South Shetlands are windswept and often cloaked in mist, but they do offer subtle pleasures: There's a wide variety of flora (mosses, lichens, flowering grasses) and no small amount of fauna (gentoo penguins, chinstrap penguins, southern giant petrels). In Deception Island, the ship plunges through Neptune's Bellows and into the flooded caldera. Here you find hot springs, an abandoned whaling station, and thousands of cape petrels – along with kelp gulls, brown and south polar skuas, and Antarctic terns. A good hike is a possibility in this fascinating and desolate volcanic landscape.

As an alternative, you may be able to engage in activities near Half Moon Island. Here chinstrap penguins and Weddell seals often haul out onto the beach near Cámara Base, an Argentine scientific research station. Conditions on the Drake Passage determine the exact time of departure.

Day 9 - 10: Familiar seas, familiar friends

Your return voyage is far from lonely. While crossing the Drake, you're again greeted by the vast array of seabirds remembered from the passage south. But they seem a little more familiar to you now, and you to them.

Day 11: There and back again

Every adventure, no matter how grand, must eventually come to an end. It's now time to disembark in Ushuaia, but with memories that will accompany you wherever your next adventure lies.

Included in this voyage

- *Voyage aboard the indicated vessel as indicated in the itinerary*
- *All meals throughout the voyage aboard the ship including snacks, coffee and tea.*
- *All shore excursions and activities throughout the voyage by Zodiac.*
- *Program of lectures by noted naturalists and leadership by experienced expedition staff.*
- *Free use of rubber boots and snowshoes.*
- *Luggage transfer from pick-up point to the vessel on the day of embarkation, in Ushuaia.*
- *Pre-scheduled group transfer from the vessel to the airport in Ushuaia (directly after disembarkation).*
- *All miscellaneous service taxes and port charges throughout the programme.*
- *Comprehensive pre-departure material.*

Excluded from this voyage

- Any airfare, whether on scheduled or charter flights*
- Pre- and post- land arrangements.*
- Passport and visa expenses.*
- Government arrival and departure taxes.*
- Meals ashore.*
- Baggage, cancellation and personal insurance (which is strongly recommended).*
- Excess baggage charges and all items of a personal nature such as laundry, bar, beverage charges and telecommunication charges.*
- The customary gratuity at the end of the voyages for stewards and other service personnel aboard (guidelines will be provided).*

ACTIVITIES YOU CAN PARTICIPATE IN

Camping

ON REQUEST



Special gear and field equipment will be provided. Camping is subject to weather, local site and environmental regulations.

Kayaking

ON REQUEST



Basic kayaking experience is of advantage, but it is not a requirement. Physical fitness is essential. Kayaking is subject to weather and prevailing ice conditions.

Snow-Shoeing

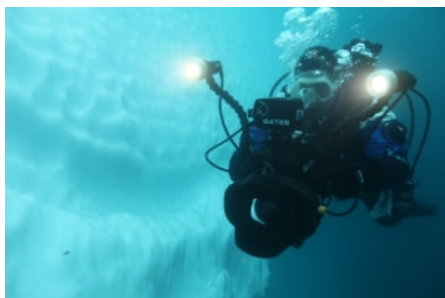
FREE



Snowshoe walking is easy and does not require any technical skills. The snowshoes will fit all boot sizes and can be used in combination with Oceanwide's rubber boots

Diving

ON REQUEST



You must be advanced and experienced in dry suit and cold water diving. Diving is subject to local ice and weather conditions.

CABINS & PRICES

Quadruple Porthole



1 porthole
 2 upper & lower berths
 Private shower & toilet
 Desk & chair
 Flatscreen TV
 Telephone & WiFi (supplemented)
 Hair dryer
 Ample storage space
 This cabin is suitable for families traveling with children, or passengers who do not require a twin or more luxurious cabin



Complete cabin
 Price for the complete cabin, fully occupied.

29200 USD



Sharing berth
 Share your cabin with others for the best price

7300 USD

Triple Porthole



1 porthole
 1 upper berth & 2 lower berths
 Private shower & toilet
 Desk & chair
 Flatscreen TV
 Telephone & WiFi (supplemented)
 Hair dryer
 Ample storage space
 This cabin is suitable for families traveling with children, or passengers who do not require a twin or more luxurious cabin



Complete cabin
 Price for the complete cabin, fully occupied.

26850 USD



Sharing berth
 Share your cabin with others for the best price

8950 USD

Twin Porthole



1 porthole
 2 lower berths
 Private shower & toilet
 Desk & chair
 Flatscreen TV
 Telephone & WiFi (supplemented)
 Hair dryer
 Ample storage space



Complete cabin
 Price for the complete cabin, fully occupied.

17900 USD



Single cabin
 Price for the complete cabin occupied by 1 person (1.7x the shared rate).

15215 USD



Sharing berth
 Share your cabin with others for the best price

8950 USD

Twin Window



1 window
2 lower berths
Private shower & toilet
Desk & chair
Flatscreen TV
Telephone & WiFi (supplemented)
Hair dryer
Ample storage space



Complete cabin
Price for the complete cabin, fully occupied. 18800 USD



Single cabin
Price for the complete cabin occupied by 1 person (1.7x the shared rate). 15980 USD



Sharing berth
Share your cabin with others for the best price 9400 USD

Twin Deluxe



2 windows
2 lower berths
Private shower & toilet
Desk & chair
Flatscreen TV
Telephone & WiFi (supplemented)
Hair dryer
Ample storage space
These cabins are corner cabins and are slightly more spacious than the normal twin porthole/window cabins



Complete cabin
Price for the complete cabin, fully occupied. 19900 USD

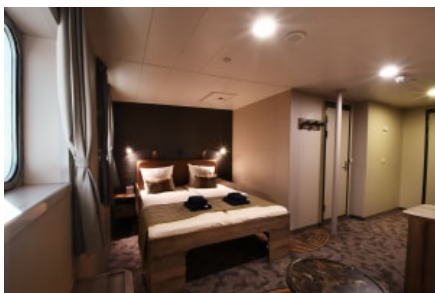


Single cabin
Price for the complete cabin occupied by 1 person (1.7x the shared rate). 16915 USD



Sharing berth
Share your cabin with others for the best price 9950 USD

Superior



2 windows
1 double bed
1 sofa bed
Private shower & toilet
Desk & chair
Flatscreen TV
Telephone & WiFi (supplemented)
Refrigerator
Coffee & tea maker
Hair dryer
Ample storage space



Complete cabin
Price for the complete cabin, fully occupied. 21400 USD



Single cabin
Price for the complete cabin occupied by 1 person (1.7x the shared rate). 18190 USD