

Antarctica Special - Discovery and learning voyage

Tour the wondrous western shores of the Antarctic Peninsula



Title:	Antarctica Special - Discovery and learning voyage
Dates:	23 Dec, 2021 - 4 Jan, 2022
Tripcode:	JNS24-21
Duration:	12 nights
Ship:	m/v Janssonius
Embarkation:	Ushuaia
Disembarkation:	Ushuaia
Language:	English speaking voyage

ITINERARY

PLEASE NOTE: All itineraries are for guidance only. Programs may vary depending on local ice and weather conditions and in order to take advantage of opportunities to see wildlife. The on-board expedition leader determines the final itinerary. Itineraries may mention places that require permission to land, which must be granted by the relevant national authorities. Such permission is not granted prior to the publishing of these itineraries. Flexibility is paramount for expedition cruises. Average cruising speed of m/v Janssonius is 10,5 knots.

The seabirds of the South Shetlands, the ice formations of Antarctic Sound, the whale hotspots of Wilhelmina Bay – all of these experiences and more await you on this exploratory expedition cruise, which focuses not only on visiting Antarctica’s most iconic locations but also its most beloved wildlife. Penguins included.

Day 1: End of the world, start of a journey

Your voyage begins where the world drops off. Ushuaia, Argentina, reputed to be the southernmost city on the planet, is located on the far southern tip of South America. Starting in the afternoon, you embark from this small resort town on Tierra del Fuego, nicknamed “The End of the World,” and sail the mountain-fringed Beagle Channel for the remainder of the evening.

Day 2 – 3: Path of the polar explorers

Over the next two days on the Drake Passage, you enjoy some of the same experiences encountered by the great polar explorers who first charted these regions: cool salt breezes, rolling seas, maybe even a fin whale spouting up sea spray. After passing the Antarctic Convergence – Antarctica’s natural boundary, formed when north-flowing cold waters collide with warmer sub-Antarctic seas – you are in the circum-Antarctic upwelling zone. Not only does the marine life change, the avian life changes too. Wandering albatrosses, grey-headed albatrosses, black-browed albatrosses, light-mantled sooty albatrosses, cape pigeons, southern fulmars, Wilson’s storm petrels, blue petrels, and Antarctic petrels are a few of the birds you might see.

Day 4: Scenes of South Shetland

The volcanic islands of the South Shetlands are windswept and often cloaked in mist, but they do offer subtle pleasures: There’s a wide variety of flora (mosses, lichens, flowering grasses) and no small amount of fauna (gentoo penguins, chinstrap penguins, southern giant petrels). In Deception Island, the ship plunges through Neptune’s Bellows and into the flooded caldera. Here you find hot springs, an abandoned whaling station, and thousands of cape petrels – along with kelp gulls, brown and south polar skuas, and Antarctic terns. A good hike is a possibility in this fascinating and desolate volcanic landscape.

As an alternative, you may be able to engage in activities near Half Moon Island. Here chinstrap penguins and Weddell seals often haul out onto the beach near Cámara Base, an Argentine scientific research station.

Day 5: Icescapes of the Antarctic Sound

Glaciers, icebergs, and pack ice extend into the horizon. On the northern side of the Antarctic Sound is Dundee Island, where you have the chance to land at Petrel Cove. The Argentinean Base Petrel is located here, and its massive airplane hangar hints at the base's heritage: It was from this stretch of flat land that Lincoln Ellsworth and Herbert Hollick-Kenyon completed the first flight across the Antarctic Continent in 1935.

Day 6: Sailing the Wright Ice Piedmont

Next you sail along the Wright Ice Piedmont at Graham Land, which was mapped based on photographs taken between 1955–57. The piedmont was named after the brothers Wilbur and Orville Wright, who in December 1903 were the first people to fly an airplane.

Day 7 - 8: Valdivia, Wilhelmina Bay, Brabant Island

We may land at the following spectacular sites:

Valdivia Point views: Keeping to the west coast of Graham Land, you reach Valdivia Point, named after the German ship *Valdivia* by Otto Nordenskjöld's Swedish Antarctic Expedition. Further west you may also see Challenger Island and Bluff Island.

Wilhelmina Bay – A likely spot to see feeding humpback whales. If conditions allow, you may even embark on a Zodiac cruise to the ghostly wreck of the *Guvernøren*, a whaling vessel that caught fire here in 1915.

The bays of Brabant Island

You then continue sailing to the western side of Brabant Island, exploring Avicenna Bay, Buls Bay, and the analysis-inspiring Freud Passage.

Day 9 - 10: Further exploration

Sites you may visit during the last two days in Antarctica may include:

Danco Island – Activities here may focus on the gentoo penguins nesting on the island, in addition to the Weddell and crabeater seals that can be found nearby.

Neko Harbour – An epic landscape of mammoth glaciers and endless wind-carved snow, Neko Harbour offers opportunities for a Zodiac cruise and landing that afford the closest views of the surrounding alpine peaks.

Paradise Bay – You may be able to take a Zodiac cruise in these sprawling, ice-flecked waters, where there's a good chance you'll encounter humpback and minke whales.

Port Lockroy – After sailing through the Neumayer Channel, you may get a chance to visit the former British research station – now a museum and post office – of Port Lockroy on Goudier Island. You may also be able to partake in activities around Jougla Point, meeting gentoo penguins and blue-eyed shags.

At the nearby sites, such as Damoy Point there may be the opportunity for snowshoeing to the old ski-way, this is also one of our favourite camping sites.

Conditions on the Drake Passage determine the exact time of departure.

Day 11 - 12: Familiar seas, familiar friends

Your return voyage is far from lonely. While crossing the Drake, you're again greeted by the vast array of seabirds remembered from the passage south. But they seem a little more familiar to you now, and you to them.

Day 13: There and back again

Every adventure, no matter how grand, must eventually come to an end. It's now time to disembark in Ushuaia, but with memories that will accompany you wherever your next adventure lies.

Included in this voyage

- Voyage aboard the indicated vessel as indicated in the itinerary
- All meals throughout the voyage aboard the ship including snacks, coffee and tea.
- All shore excursions and activities throughout the voyage by Zodiac.
- Program of lectures by noted naturalists and leadership by experienced expedition staff.
- Free use of rubber boots and snowshoes.
- Luggage transfer from pick-up point to the vessel on the day of embarkation, in Ushuaia.
- Pre-scheduled group transfer from the vessel to the airport in Ushuaia (directly after disembarkation).
- All miscellaneous service taxes and port charges throughout the programme.
- Comprehensive pre-departure material.

Excluded from this voyage

Any airfare, whether on scheduled or charter flights

Pre- and post- land arrangements.

Passport and visa expenses.

Government arrival and departure taxes.

Meals ashore.

Baggage, cancellation and personal insurance (which is strongly recommended).

Excess baggage charges and all items of a personal nature such as laundry, bar, beverage charges and telecommunication charges.

The customary gratuity at the end of the voyages for stewards and other service personnel aboard (guidelines will be provided).

ACTIVITIES YOU CAN PARTICIPATE IN

In-field and on-board discovery and learning workshops, exhibitions and performances

FREE



Participate in various interactive in-field and on-board workshops, exhibitions, and performances featuring themes of discovery and learning. Specific topics may vary based on voyage, departure location, and the availability of specific expedition staff and/or guest lecturers and performers.

Camping

ON REQUEST



Special gear and field equipment will be provided. Camping is subject to weather, local site and environmental regulations.

Kayaking

ON REQUEST



Basic kayaking experience is of advantage, but it is not a requirement. Physical fitness is essential. Kayaking is subject to weather and prevailing ice conditions.

Snow-Shoeing

FREE



Snowshoe walking is easy and does not require any technical skills. The snowshoes will fit all boot sizes and can be used in combination with Oceanwide's rubber boots

CABINS & PRICES

Quadruple Porthole



2 portholes
 2 upper & lower berths
 Small sofa
 Private shower & toilet
 Flatscreen TV
 Desk & chair
 Telephone and WiFi (supplemented)
 Hair dryer
 Cabinet
 Wardrobe
 This cabin is suitable for families traveling with children, or passengers who do not require a twin or more luxurious cabin



Complete cabin
 Price for the complete cabin, fully occupied.

36400 USD



Sharing berth
 Share your cabin with others for the best price

9100 USD

Triple Porthole



2 portholes
 1 upper berth & 2 lower berths
 Small sofa
 Private shower & toilet
 Flatscreen TV
 Desk & chair
 Telephone and WiFi (supplemented)
 Hair dryer
 Cabinet
 Wardrobe
 This cabin is suitable for families traveling with children, or passengers who do not require a twin or more luxurious cabin



Complete cabin
 Price for the complete cabin, fully occupied.

30600 USD



Sharing berth
 Share your cabin with others for the best price

10200 USD

Twin Porthole



2 portholes
 2 single beds
 Small sofa
 Private shower & toilet
 Flatscreen TV
 Desk & chair
 Telephone and WiFi (supplemented)
 Hair dryer
 Cabinet
 Wardrobe



Complete cabin
 Price for the complete cabin, fully occupied.

22400 USD



Single cabin
 Price for the complete cabin occupied by 1 person (1.7x the shared rate).

19040 USD



Sharing berth
 Share your cabin with others for the best price

11200 USD

Twin Window



1 window
2 single beds
Small sofa
Private shower & toilet
Flatscreen TV
Desk & chair
Telephone and WiFi (supplemented)
Hair dryer
Cabinet
Wardrobe
Please be aware that the view from some windows might be partially obstructed due to the design requirements of the ship



Complete cabin
Price for the complete cabin, fully occupied. 23300 USD

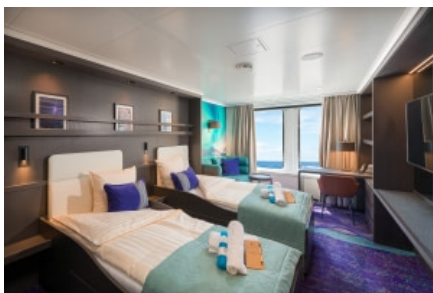


Single cabin
Price for the complete cabin occupied by 1 person (1.7x the shared rate). 19805 USD



Sharing berth
Share your cabin with others for the best price 11650 USD

Twin Deluxe



2 windows
2 single beds
Sofa
Private shower & toilet
Flatscreen TV
Desk & chair
Telephone and WiFi (supplemented)
Refrigerator
Coffee & tea maker
Bathrobe
Hair dryer
Cabinet
Wardrobe



Complete cabin
Price for the complete cabin, fully occupied. 24600 USD



Single cabin
Price for the complete cabin occupied by 1 person (1.7x the shared rate). 20910 USD



Sharing berth
Share your cabin with others for the best price 12300 USD

Superior



2 windows
1 double bed
Sofa
Private shower & toilet
Flatscreen TV
Desk & chair
Telephone and WiFi (supplemented)
Refrigerator
Coffee & tea maker
Bathrobe
Hair dryer
Cabinet
Wardrobe



Complete cabin
Price for the complete cabin, fully occupied. 26200 USD



Single cabin
Price for the complete cabin occupied by 1 person (1.7x the shared rate). 22270 USD

Junior Suite



1 double window
1 double bed
Private shower & toilet
Flatscreen TV
Desk & chair
Telephone and WiFi (supplemented)
Refrigerator
Coffee & tea maker
Bathrobe
Hair dryer
Cabinet
Wardrobe



Complete cabin
Price for the complete cabin, fully occupied.

27900 USD



Single cabin
Price for the complete cabin occupied by 1 person (1.7x the shared rate).

23715 USD

Grand Suite with private balcony



1 double window
1 double bed
Sofa
Private balcony
Private shower & toilet
Flatscreen TV
Desk & chair
Telephone and WiFi (supplemented)
Refrigerator
Coffee & tea maker
Bathrobe
Hair dryer
Cabinet
Wardrobe



Complete cabin
Price for the complete cabin, fully occupied.

31500 USD



Single cabin
Price for the complete cabin occupied by 1 person (1.7x the shared rate).

26775 USD