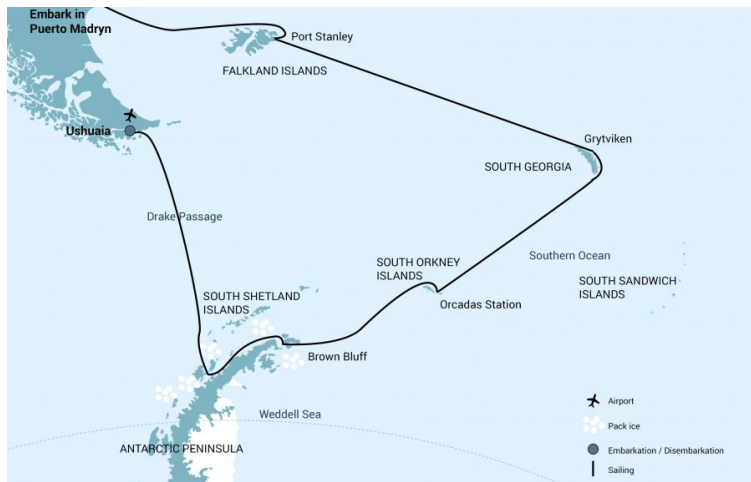


Falkland Islands - South Georgia - Antarctica - Birding

Meet at least six penguin species!



Title:	Falkland Islands - South Georgia - Antarctica - Birding
Dates:	25 Oct - 14 Nov, 2021
Tripcode:	OTL21-21
Duration:	20 nights
Ship:	m/v Ortelius
Embarkation:	Puerto Madryn
Disembarkation:	Ushuaia
Language:	English speaking voyage

ITINERARY

PLEASE NOTE: All itineraries are for guidance only. Programs may vary depending on local ice and weather conditions and in order to take advantage of opportunities to see wildlife. The on-board expedition leader determines the final itinerary. Itineraries may mention places that require permission to land, which must be granted by the relevant national authorities. Such permission is not granted prior to the publishing of these itineraries. Flexibility is paramount for expedition cruises. Average cruising speed of m/v Ortelius is 10,5 knots.

A cruise to the Falkland Islands, South Georgia & the Antarctic Peninsula. Visit some of the most beautiful arrays of wildlife on Earth. This journey will introduce you to at least 6 species of penguin and a whole lot of Antarctic fur seals!

Birding: -

We will have at least one dedicated expedition guide in our team who will share their expert knowledge about bird species and who will be available to help you identify, photograph on deck and learn more about the birds that we see. In addition to outdoor sessions, our guide will focus on species and related information on the birds of the Antarctic in re-caps and lectures onboard.

Day 1: Sandy Argentine beaches

You embark from Puerto Madryn in the afternoon, your prow aimed for the Falkland Islands. Golfo Nuevo is renowned for its visiting southern right whales, so you have a good chance of spotting one as you sail toward the open ocean.

Day 2 – 3: Sea life, sea birds

Though you're now at sea, there's rarely a lonesome moment here. Several species of bird follow the vessel southeast, such as albatrosses, storm petrels, shearwaters, and diving petrels.

Day 4: Finding the Falklands

The Falkland Islands offer an abundance of wildlife that is easily approachable, though caution is always advised. These islands are largely unknown gems, the site of a 1982 war between the UK and Argentina. Not only do various species of bird live here, but chances are great you'll see both Peale's dolphins and Commerson's dolphins in the surrounding waters.

During this segment of the voyage, you may visit the following sites:

Steeple Jason – Home to the world's largest black-browed albatross colony (roughly 113,000), Steeple Jason is a wild and rarely visited island buffeted by wind and waves. Weather and swell conditions dictate the journey here.

Carcass Island – Despite its name, this island is pleasantly rodent-free and hence bounteous with birdlife and many endemic species. Anything from breeding Magellanic penguins and gentoos to numerous waders and passerine birds (including Cobb's wrens and tussock-birds) live here.

Saunders Island – On Saunders Island you can see the black-browed albatross and its sometimes-clumsy landings, along with

breeding imperial shags and rockhopper penguins. King penguins, Magellanic penguins, and gentoos are also found here.

Day 5: The seat of Falklands culture

The capital of the Falklands and center of its culture, Port Stanley has some Victorian-era charm: colorful houses, well-tended gardens, and English-style pubs are all to be found here. You can also see several century-old clipper ships nearby, silent witnesses to the hardships of 19th century sailors. The small but interesting museum is also worth a visit, covering the early days of settlement up to the Falklands War. Approximately 2,100 people live in Port Stanley. Admission to the museum is included.

Day 6 – 7: Once more to the sea

En route to South Georgia, you now cross the Antarctic Convergence. The temperature cools considerably within the space of a few hours, and nutritious water rises to the surface of the sea due to colliding water columns. This phenomenon attracts a multitude of seabirds near the ship, including several species of albatross, shearwaters, petrels, prions, and skuas.

Day 8 – 11: South Georgia journey

Today you arrive at the first South Georgia activity site. Please keep in mind that weather conditions in this area can be challenging, largely dictating the program.

Sites you might visit include:

Prion Island – This location is closed during the early part of the wandering albatross breeding season (November 20 – January 7). The previous summer's wandering albatross chicks are almost ready to fledge, and adults are seeking out their old partners after a year and a half at sea.

Salisbury Plain, St. Andrews Bay, Gold Harbour – These sites not only house the three largest king penguin colonies in South Georgia, they're also three of the world's largest breeding beaches for southern elephant seals. Only during this time of year do they peak in their breeding cycle. Watch the four-ton bulls keep a constant vigil (and occasionally fight) over territories where dozens of females have just given birth or are about to deliver. You can also see a substantial number of Antarctic fur seals here during the breeding season (December – January).

Fortuna Bay – A beautiful outwash plain from Fortuna Glacier is home to a large number of king penguins and seals. Here you may also have the chance to follow the final leg of Shackleton's route to the abandoned whaling village of Stromness. This path cuts across the mountain pass beyond Shackleton's Waterfall, and as the terrain is partly swampy, be prepared to cross a few small streams.

Grytviken – In this abandoned whaling station, king penguins walk the streets and elephant seals lie around like they own the place – because they basically do. Here you might be able to see the South Georgia Museum as well as Shackleton's grave.

In the afternoon of day 11 and depending on the conditions, we will start sailing southwards in the direction of the South Orkney Islands.

Day 12: Southward bound

There may be sea ice on this route, and at the edge of the ice some south polar skuas and snow petrels could join the other seabirds trailing the vessel south.

Day 13: The scenic vistas of South Orkney

Depending on the conditions, you might visit Orcadas Base, an Argentine scientific station on Laurie Island in the South Orkney archipelago. The personnel here will happily show you their facility, where you can enjoy expansive views of the surrounding glaciers. If a visit isn't possible, you may instead land at Signy Island's Shingle Cove.

Day 14: Last push to the Antarctic

Enormous icebergs and a fair chance of fin whale sightings ensure there's never a dull moment on this last sea voyage south. Also, your best chance to spot Antarctic petrels is here.

Day 15 – 18: Awe-inspiring Antarctica

If the ice conditions permit, you now sail into the Weddell Sea. Here colossal tabular icebergs herald your arrival to the eastern side of the Antarctic Peninsula. Paulet Island, with its large population of Adélie penguins, is a possible stop. You might also visit Brown Bluff, located in the ice-clogged Antarctic Sound, where you could get the chance to set foot on the Antarctic Continent itself.

If conditions aren't favorable to enter the Weddell Sea from the east, the ship will set course for Elephant Island and head into the Bransfield Strait, between the South Shetland Island's and the Antarctic Peninsula.

The volcanic islands of the South Shetlands are windswept and often cloaked in mist, but they nonetheless offer many subtle pleasures. A wide variety of flora (mosses, lichens, flowering grasses) and fauna (gentoo penguins, chinstrap penguins, southern giant petrels) live here. Chinstrap penguins and Weddell seals often haul out onto the beach near Cámara Base, an Argentine scientific research station on Half Moon Island.

On Deception Island, the ship plunges through Neptune's Bellows and into the flooded caldera. Here you can find hot springs, an abandoned whaling station, and thousands of cape petrels. A number of kelp gulls, brown skuas, south polar skuas, and Antarctic terns can be spotted too. Wilson's storm petrels and black-bellied storm petrels also nest in the ruins of the whaling station in Whalers Bay. As an alternative, you can take part in activities near Telefon Bay, further inside the caldera.

This extended voyage gives you the chance to sail even farther down the icy coast of the western Antarctic Peninsula. There are several opportunities for great landings where you might set foot on the Antarctic Continent, surrounded by an epic landscape of alpine peaks and mammoth glaciers calving at sea level. Gentoo penguins, leopard seals, Weddell seals, humpback whales, and minke whales are often seen here.

The breathtaking scenery continues in the Bransfield Strait and, if conditions allow further South in the Gerlache Strait. Conditions on the Drake Passage determine the exact time of departure.

Day 19 – 20: Familiar seas, familiar friends

Your return voyage is far from lonely. While crossing the Drake, you're again greeted by the vast array of seabirds remembered from the passage south. But they seem a little more familiar to you now, and you to them.

Day 21: Earth's southernmost city

You arrive and disembark in Ushuaia, commonly held to be the world's most southern city. It is located on the Tierra del Fuego archipelago, nicknamed the "End of the World." But despite this stopping point, the wealth of memories you've made on your Antarctic expedition will travel with you wherever your next adventure lies.

Included in this voyage

- Voyage aboard the indicated vessel as indicated in the itinerary
- All meals throughout the voyage aboard the ship including snacks, coffee and tea.
- All shore excursions and activities throughout the voyage by Zodiac.
- Program of lectures by noted naturalists and leadership by experienced expedition staff.
- Free use of rubber boots and snowshoes.
- Pre-scheduled group transfer from the vessel to the airport in Ushuaia (directly after disembarkation).
- All miscellaneous service taxes and port charges throughout the programme.
- Comprehensive pre-departure material.

Excluded from this voyage

Any airfare, whether on scheduled or charter flights

Pre- and post- land arrangements.

Passport and visa expenses.

Government arrival and departure taxes.

Meals ashore.

Baggage, cancellation and personal insurance (which is strongly recommended).

Excess baggage charges and all items of a personal nature such as laundry, bar, beverage charges and telecommunication charges.

The customary gratuity at the end of the voyages for stewards and other service personnel aboard (guidelines will be provided).

ACTIVITIES YOU CAN PARTICIPATE IN

Birding

FREE



We will have at least one dedicated expedition guide in our team who will share their expert knowledge about bird species and who will be available to help you identify, photograph and learn more about the birds that we see.

CABINS & PRICES

Quadruple Porthole



2 portholes
 2 upper / lower berths
 Private shower & toilet
 Desk & chair
 Flatscreen TV
 Telephone & WiFi (supplemented)
 Hair dryer
 Ample storage space



Complete cabin
 Price for the complete cabin, fully occupied.

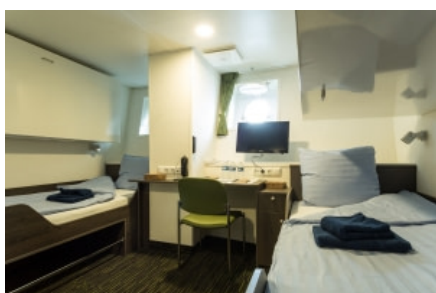
50400 USD



Sharing berth
 Share your cabin with others for the best price

12600 USD

Triple Porthole



2 portholes
 1 upper / lower berth + 1 single lower berth
 Private shower & toilet
 Desk & chair
 Flatscreen TV
 Telephone & WiFi (supplemented)
 Hair dryer
 Ample storage space



Complete cabin
 Price for the complete cabin, fully occupied.

45600 USD



Sharing berth
 Share your cabin with others for the best price

15200 USD

Twin Porthole



2 portholes
 2 lower berths
 Private shower & toilet
 Desk & chair
 Flatscreen TV
 Telephone & WiFi (supplemented)
 Hair dryer
 Ample storage space



Complete cabin
 Price for the complete cabin, fully occupied.

30400 USD



Single cabin
 Price for the complete cabin occupied by 1 person (1.7x the shared rate).

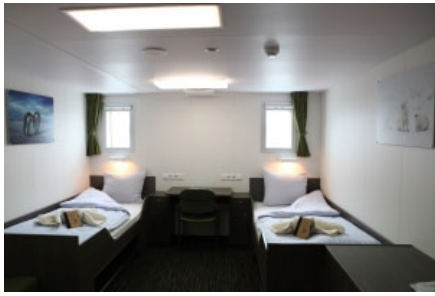
25840 USD



Sharing berth
 Share your cabin with others for the best price

15200 USD

Twin Window



2 windows
2 lower berths
Private shower & toilet
Desk & chair
Flatscreen TV
Telephone & WiFi (supplemented)
Hair dryer
Ample storage space



Complete cabin
Price for the complete cabin, fully occupied. 31800 USD



Single cabin
Price for the complete cabin occupied by 1 person (1.7x the shared rate). 27030 USD



Sharing berth
Share your cabin with others for the best price 15900 USD

Twin Deluxe



3 windows
2 lower berths
Private shower & toilet
Desk & chair
Small sofa
Refrigerator
Coffee & tea maker
Flatscreen TV
Telephone & WiFi (supplemented)
Hair dryer
Ample storage space



Complete cabin
Price for the complete cabin, fully occupied. 33800 USD



Single cabin
Price for the complete cabin occupied by 1 person (1.7x the shared rate). 28730 USD



Sharing berth
Share your cabin with others for the best price 16900 USD

Superior



2 windows (minimum)
1 double bed
1 single (sofa) bed
Private shower & toilet
Desk & chair
Flatscreen TV
Telephone & WiFi (supplemented)
Refrigerator
Coffee & tea maker
Hair dryer
Ample storage space



Complete cabin
Price for the complete cabin, fully occupied. 36300 USD



Single cabin
Price for the complete cabin occupied by 1 person (1.7x the shared rate). 30855 USD